

Anti-ADH1A Picoband Antibody
Catalog # ABO11647**Specification**

Anti-ADH1A Picoband Antibody - Product Information

Application	WB, IHC-P
Primary Accession	P07327
Host	Rabbit
Reactivity	Human, Mouse, Rat
Clonality	Polyclonal
Format	Lyophilized

Description

Rabbit IgG polyclonal antibody for Alcohol dehydrogenase 1A(ADH1A) detection. Tested with WB, IHC-P in Human;Mouse;Rat.

Reconstitution

Add 0.2ml of distilled water will yield a concentration of 500ug/ml.

Anti-ADH1A Picoband Antibody - Additional Information

Gene ID 124

Other Names

Alcohol dehydrogenase 1A, 1.1.1.1, Alcohol dehydrogenase subunit alpha, ADH1A, ADH1

Calculated MW

39859 MW KDa

Application Details

Immunohistochemistry(Paraffin-embedded Section), 0.5-1 µg/ml, Human, By Heat

Western blot, 0.1-0.5 µg/ml, Human, Mouse, Rat

Subcellular Localization

Cytoplasm.

Protein Name

Alcohol dehydrogenase 1A

Contents

Each vial contains 5mg BSA, 0.9mg NaCl, 0.2mg Na₂HPO₄, 0.05mg NaN₃.

Immunogen

E. coli-derived human ADH1A recombinant protein (Position: K213-F375). Human ADH1A shares 87.1% and 82.8% amino acid (aa) sequence identity with mouse and rat ADH1A, respectively.

Purification

Immunogen affinity purified.

Cross Reactivity

No cross reactivity with other proteins

Storage

At -20°C for one year. After reconstitution, at 4°C for one month. It can also be aliquotted and stored frozen at -20°C for a longer time. Avoid repeated freezing and thawing.

Anti-ADH1A Picoband Antibody - Protein Information

Name ADH1A

Synonyms ADH1

Function

Alcohol dehydrogenase (PubMed: [2738060](http://www.uniprot.org/citations/2738060)). Oxidizes primary as well as secondary alcohols. Ethanol is a very poor substrate (PubMed: [2738060](http://www.uniprot.org/citations/2738060)).

Cellular Location

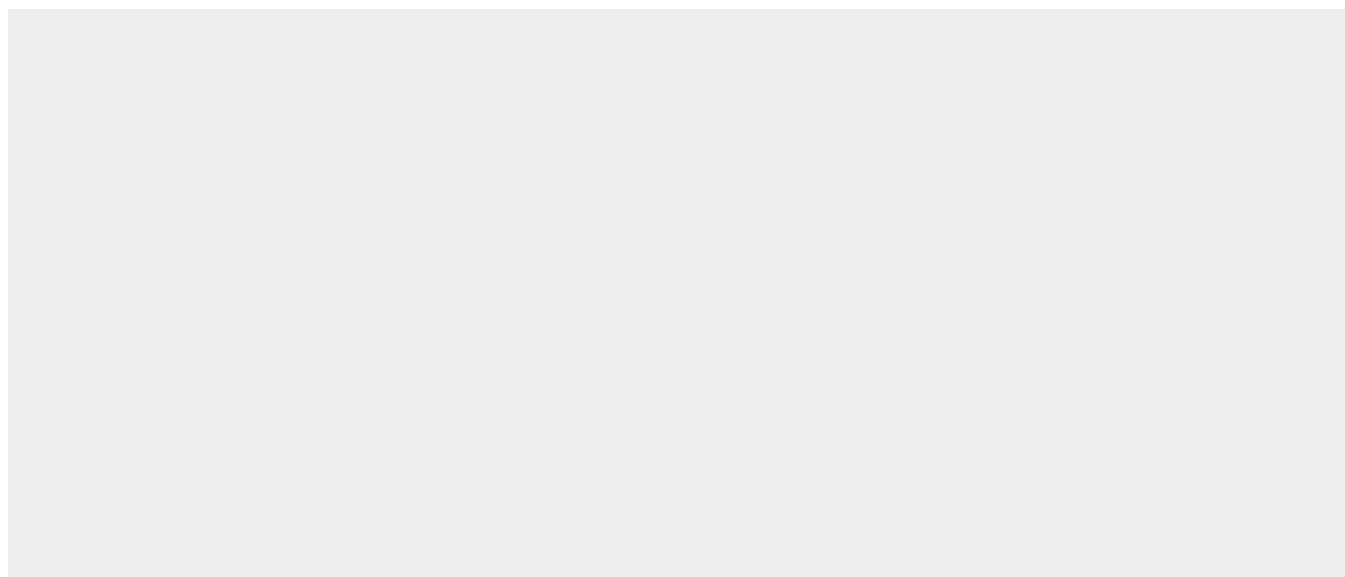
Cytoplasm.

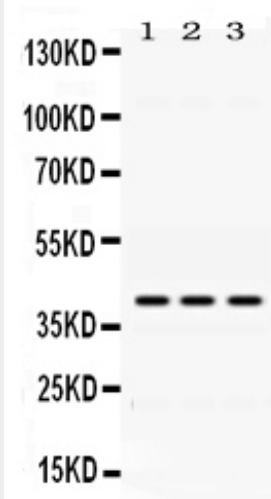
Anti-ADH1A Picoband Antibody - Protocols

Provided below are standard protocols that you may find useful for product applications.

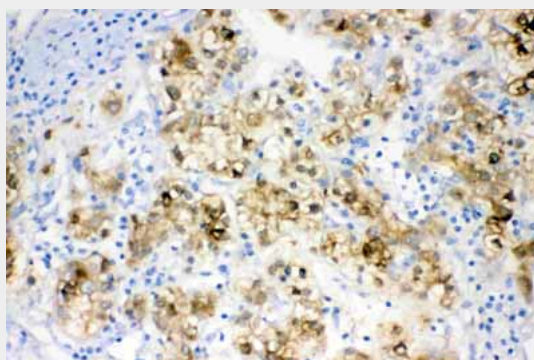
- [Western Blot](#)
- [Blocking Peptides](#)
- [Dot Blot](#)
- [Immunohistochemistry](#)
- [Immunofluorescence](#)
- [Immunoprecipitation](#)
- [Flow Cytometry](#)
- [Cell Culture](#)

Anti-ADH1A Picoband Antibody - Images





Western blot analysis of ADH1A expression in rat lung extract (lane 1), mouse liver extract (lane 2) and HEPG2 whole cell lysates (lane 3). ADH1A at 40KD was detected using rabbit anti- ADH1A Antigen Affinity purified polyclonal antibody (Catalog # ABO11647) at 0.5 μ g/mL. The blot was developed using chemiluminescence (ECL) method .



ADH1A was detected in paraffin-embedded sections of human liver cancer tissues using rabbit anti- ADH1A Antigen Affinity purified polyclonal antibody (Catalog # ABO11647) at 1 μ g/mL. The immunohistochemical section was developed using SABC method .

Anti-ADH1A Picoband Antibody - Background

Alcohol dehydrogenase 1A is an enzyme that in humans is encoded by the ADH1A gene. This gene encodes a member of the alcohol dehydrogenase family. The encoded protein is the alpha subunit of class I alcohol dehydrogenase, which consists of several homo- and heterodimers of alpha, beta and gamma subunits. Alcohol dehydrogenases catalyze the oxidation of alcohols to aldehydes. This gene is active in the liver in early fetal life but only weakly active in adult liver. And this gene is found in a cluster with six additional alcohol dehydrogenase genes, including those encoding the beta and gamma subunits, on the long arm of chromosome 4. Mutations in this gene may contribute to variation in certain personality traits and substance dependence.